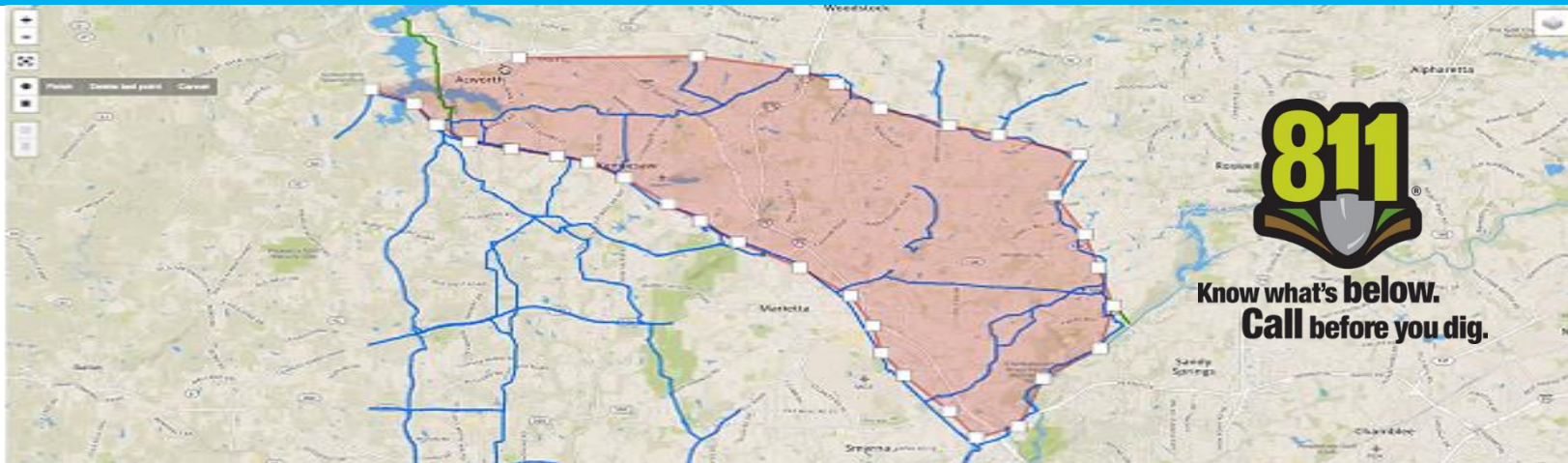


BOSS811 Facility Mapping



BOSS811 Facility Mapping

BOSS811 Facility Mapping is an advanced capability that provides a visual component to effective management and tracking of dig requests. Facility Mapping is achieved through integrations with GIS Mapping Software Map views of the proposed dig site are displayed using the coordinates of the dig site received from the One Call Center. Utility overlays can be displayed on the maps and provides a visual indication of how utility infrastructure might be impacted by any new excavation request. Service areas boundaries can be defined as Area Maps and used in routing rules.

BOSS811 Facility Mapping Benefits

GIS Integration to Display Facility Maps

BOSS811 provides integrations with many GIS Mapping Software to provide visual indication of how utility infrastructure might be impacted by excavation requests

Area Based Routing to Improve Response Times

Automatically assigning the ticket based on the polygon area based routing will significantly improve response times and reduces cost.

Tracking of All Locators in the Field

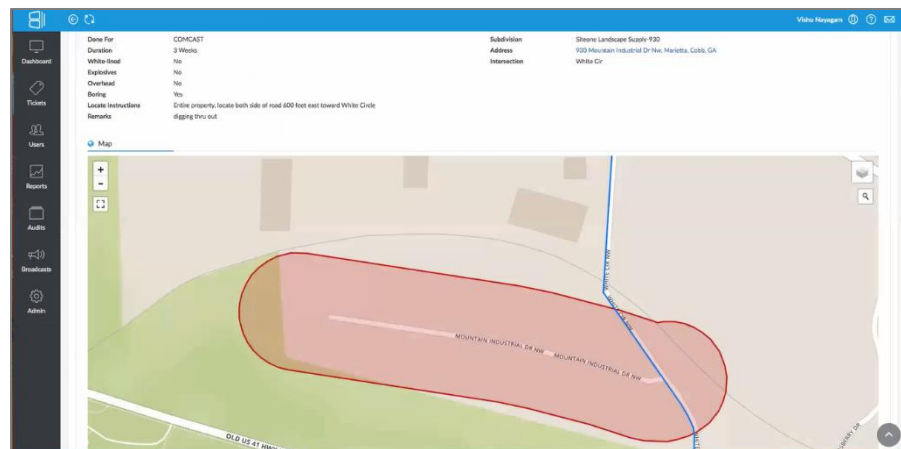
The ability to track the physical location of locators in the field in real time can improve efficiency and optimize locator performance

GIS INTEGRATION

BOSS811 provides integrations with many GIS Mapping Software including ESRI products such as ArcGIS, and supports Keyhole Markup Languages KML/KMZ. BOSS811 can be configured to many different map formats that may be used by a provider.

TICKET MAP VIEW

The Ticket Map view provides a map view of the proposed dig site using the coordinates of the dig site received from the One Call Center. In addition to the pictorial view of dig site other information displayed includes address, excavator, duration of excavation, locate details and any instructions and remarks





BOSS811 Features

SYSTEM & ROUTING



A Secure Cloud-based solution with a powerful routing engine to speed up ticket handling and review.

TICKET MANAGEMENT



Provides effective control & management of requests coming in from the 811 One Call Centers

FACILITY MAPPING



Integrates with GIS Mapping software to displays facility maps that pinpoints underground assets

DASHBOARDS & REPORTS



Comprehensive metrics and reports that provide the necessary information to track performance

MOBILE APPS & SKETCHING



Enables locators to access and update tickets, upload attachments from mobile devices.

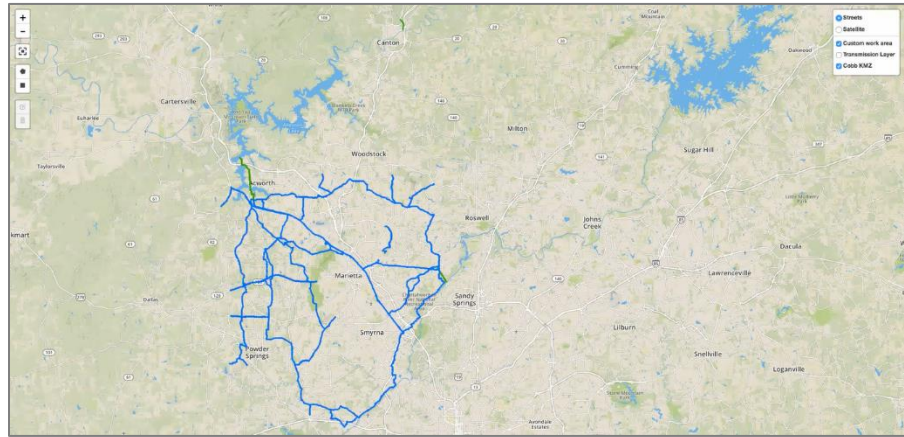
SECURITY & NOTIFICATIONS



A notification engine and roles based security is provided together with a user friendly configuration interface.

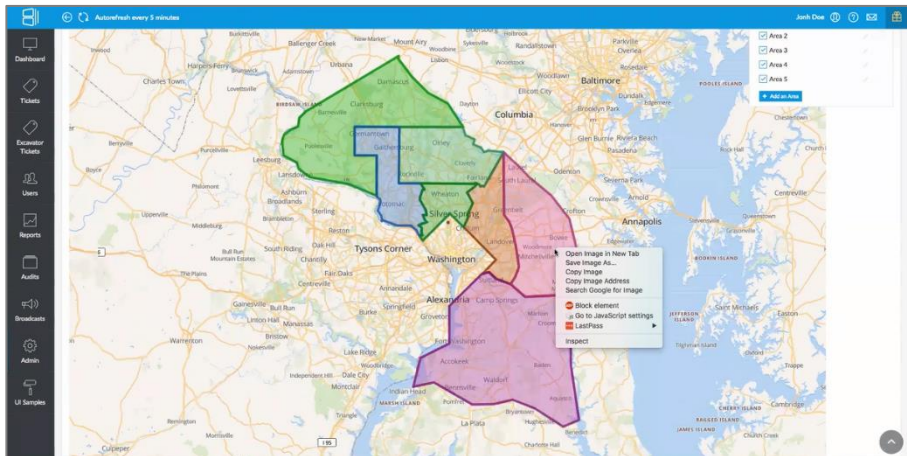
MAP OVERLAYS

With BOSS811 GIS mapping the various utility overlays can be displayed on the maps. This capability provides a visual indication of how utility infrastructure might be impacted by any new excavation request. Such information can be displayed in the ticket map view and in the map view of the mobile app.



AREA MAPS FOR USE IN ROUTING

Service areas boundaries can be defined as Area Maps (see next section), named and used in routing rules. Namely if the polygon of the dig site as received from the One Call Center intersects with the polygon of a specific area map then certain routing rules can be applied such as assigning to a certain locator or teams of locators.



CREATING AREA MAPS

Area maps can be created using the software built into BOSS811. Once a given map is selected the area polygon can be created using a simple point and click process to define the borders of the desired area. The polygon shape can be named and used in any routing.